

## A FEW THINGS YOU CAN DO

- Never leave valuables in plain view, what can be seen can be stolen. Put them in the trunk out of sight;
- Always park in high-traffic, well lighted areas, when possible;
- Never leave any keys in the car or ignition, even when inside a locked garage, or keep keys in a hide-a-key boxes;
- Always roll up your windows and lock the car, even if it is parked in front of your home;
- CALL 9-1-1 - IF YOU SUSPECT CRIMINAL ACTIVITY! ALWAYS REPORT CRIME.
- Form, or become involved with the **Neighborhood Watch Program**. *Be the eyes and ears of your neighborhood.*

## Meridian Police Department Mission Statement

To Provide the highest quality of service, in partnership with our community, to preserve and protect life and property through education, prevention and enforcement



## Don't allow your gun to be used to commit a crime!

Guns, which are stolen from cars, are frequently used to commit crimes;

Keep your guns locked and stored in a safe place, away from the "bad guys";

Never store guns or weapons in your vehicles;

When transporting guns (for target practice or hunting) remember to use gun locks!

**FREE Gun Locks** are available at Meridian Police Department—M-F, 7am-7pm.

Meridian Police Department  
Crime Prevention  
1401 E. Watertower St.  
Meridian, ID 83642  
Phone: 208.846.7360  
Fax: 208.846.7366



## Police Department

Jeff Lavey, Chief of Police

## VEHICLE BURGLARIES: *A CRIME OF OPPORTUNITY*



## Steps to protect your vehicle

# WORKING TOGETHER WE CAN MAKE A DIFFERENCE

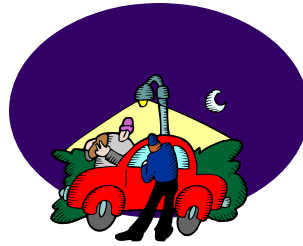
## NEIGHBORHOOD AWARENESS

The crime of vehicle burglary is on the rise in Meridian and it is now more important than ever for neighbors to stay alert and citizens to take the steps to protect their property. Often times vehicle burglars target vehicles based on location and what goods are visible from outside of the vehicle.

Many times burglary suspects may live in or around your neighborhood. It is critical to report any suspicious activity occurring in your neighborhood immediately such as; pedestrians late at night or slow moving vehicles traveling late at night. Remember that most vehicle burglaries occur between 11pm and 6:00am. If you are up at night take a look outside, be the eyes and ears of your neighborhood— report a crime.

- The non emergency dispatch number in Ada County is (208) 377-6790.
- Meridian Police Department  
888-6678 (M-F 7am-7pm)
- Meridian Police Crime Prevention  
846-7360 (M-Th)

## WHEN DO VEHICLE BURGLARIES OCCUR?



*Always report suspicious activity—dial 9-1-1*

6:00 am and 11:00pm which represents a 17 hour time period.

Statistics indicate that 50% of car burglaries which occur within the City of Meridian take place within a 7 hour period – 11:00 pm until 6 am. As compared to the other 50% occurred between

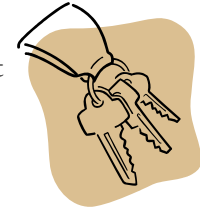
## WHERE DO MOST VEHICLE BURGLARIES OCCUR?

Commercial business parking lots are a common place where vehicle burglaries occur in the City of Meridian, and approximately 35% of the vehicle burglaries that have occurred in 2004 were in business parking lots. The other 65% occurred when the victim's vehicle was parked at a residence or at an apartment complex parking lot.



## HOW COULD A THIEF GAIN ACCESS TO YOUR VEHICLE?

Frequently it is through vehicle doors that are left unlocked, prying the rear sliding window of pick-ups and breaking out windows.



## WHAT DO BURGLARS STEAL FROM YOUR CAR?

Papers with personal information, frequently used for ID Theft, purses and wallets (credit cards/cash/checkbooks), firearms, cell phones, car stereo equipments, cameras, tools, computers, clothing (duffel bags/backpacks) golf clubs, spare change and #1 is compact discs.



## WHAT DO THEY DO WITH YOUR PROPERTY?

Exchange it for drugs. Keep it for their personal use. Sell or pawn it for cash. Dump it for more valuable stolen goods.

Visit us on the web: [www.meridiancity.org](http://www.meridiancity.org)